

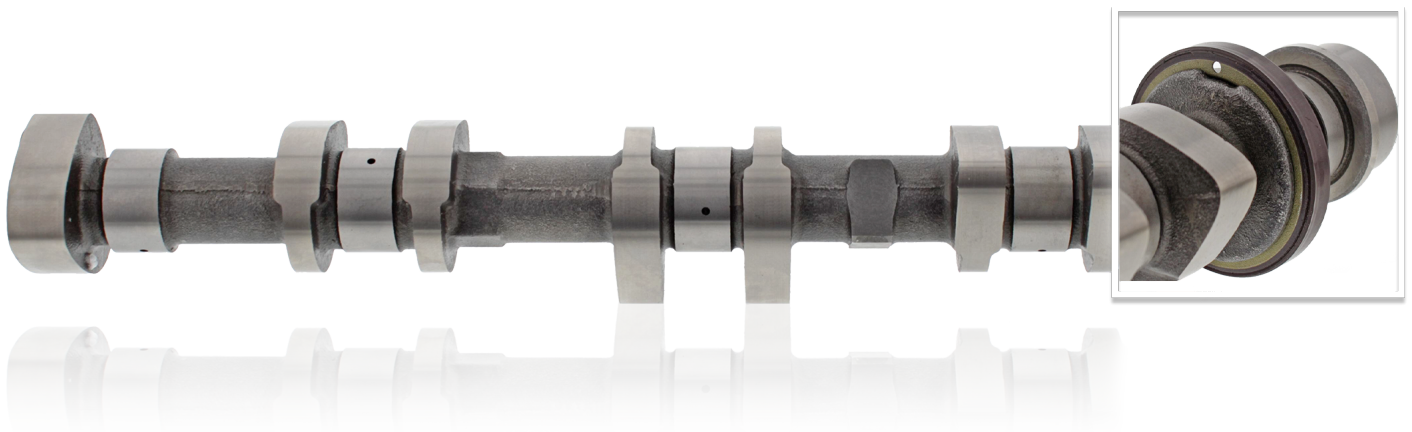
**ISSUE: Camshaft impulse rings not pre-fitted.** Incorrect or missing installation will prevent engine start.

The camshaft position rings supplied with this cylinder head are not pre-installed.

These **MUST** be correctly positioned during final assembly.

Failure to install the rings will result in non-starting of the engine.

**Camshaft references C448 and C449 are already supplied with position rings fitted.**



**INSTALLER RESPONSIBILITY:** Fit the impulse rings in the correct orientation. Align the hole in the ring with the notch on the camshaft.\*

\* The hole is for the magnetic pickup of the camshaft sensors.

*FAI products are designed for use in standard, unmodified vehicles and are not intended for custom or altered applications. All components must be installed by a qualified technician.*

*Please note: FAI products are supplied without fitting instructions.*

For more information, email [technical@faiauto.com](mailto:technical@faiauto.com)

[faiauto.com](http://faiauto.com)