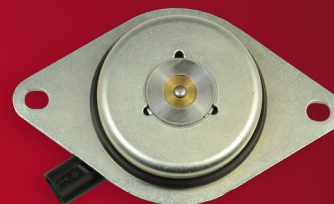


The Oil Control Valve (OCV) is a vital component that regulates oil flow to each Variable Valve Timing Hub/Sprocket (VVT). The OCV can fail due to wear, contamination or corrosion. If the OCV is faulty it will cause the VVT to fail and promoting timing chain wear. To ensure long service life, It is recommended that all OCV's are replaced when any VVT timing chain kit is being replaced.

CHEVROLET  
OPEL/VAUXHALL

AVEO | CRUZE | ORLANDO | TRAX  
ADAM | AGILA | ASTRA | COMBO | CORSA  
INSIGNIA | MERIVA | MOKKA | TIGRA | ZAFIRA

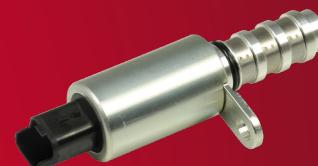
**OCV001**



BMW  
CITROEN/DS  
MINI  
OPEL/VAUXHALL  
PEUGEOT

1/3 SERIES  
BERLINGO | C3/4/5 | C-ELYSEE | DS3/4/5  
MINI | CLUBMAN | COUNTRYMAN | PACEMAN  
CORSA | CROSSLAND | GRANDLAND  
108 | 2008 | 207 | 208 | 3008 | 301 | 308 | 408  
5008 | 508 | PARTNER | RCZ

**OCV002**



ALFA ROMEO  
CHEVROLET  
FIAT  
OPEL/VAUXHALL  
SAAB

159 | BRERA | SPIDER  
CAPTIVA | COBALT | HHR | MALIBU  
CROMA  
ANTARA | GT | INSIGNIA  
9-3 | 9-3X | 9-5

**OCV003**



ALFA ROMEO  
CHEVROLET  
FIAT  
OPEL/VAUXHALL  
SAAB

159 | BRERA | SPIDER  
CAPTIVA | COBALT | HHR | MALIBU  
CROMA  
ANTARA | GT | INSIGNIA  
9-3 | 9-3X | 9-5

**OCV004**



AUDI  
SEAT  
SKODA  
VW

A1 | A3  
ALHAMBRA | ALTEA | CORDOBA | IBIZA | LEON | TOLEDO  
FABIA | OCTAVIA | RAPID | ROOMSTER | SUPERB | YEIT  
BEETLE | CC | EOS | GOLF | JETTA | PASSAT | POLO  
SCIROCCO | TIGUAN | TOURAN

**OCV011**





# OIL CONTROL VALVES PA0071



# OIL CONTROL VALVES PA0071

NISSAN

100NX | 350Z | ALMERA | ALTIMA | AVENIR  
BLUEBIRD | CARAVAN | CUBE | EXPERT | FUGA  
GT-R | LUCINO | MICRA | MURANO | NAVARA  
NOTE | NV350 | PRESAGE | PRIMERA | ROGUE  
SENTRA | SERENA | SKYLINE | SUNNY | TEANA  
VANETTE | WINGROAD | X-TRAIL

**OCV012**



TOYOTA

ALLION | AQUA | AURIS | AVENSIS | bB | CALDINA  
CELZIA | C-HR | COROLLA | ECHO | ISIS  
MATRIX | MR2 | OPA | PLATZ | PORTE  
PREMIOPRIUS | PROBOX | RACTIS | RAUM MPV  
RAV 4 | URBAN CRUISER | VERSO | VIOS | VISTA  
WILL | WISH | YARIS

**OCV013**



ALFA ROMEO  
CHEVROLET  
FIAT  
OPEL/VAUXHALL  
SAAB

159  
AVEO | CRUZE | ORLANDO | TRAX  
CROMA  
ANTARA | INSIGNIA | MOKKA | SIGNUM | VECTRA | ZAFIRA  
9-5

**OCV015**



FORD  
LAND ROVER  
MAZDA  
VOLVO

FOCUS | FUSION | GALAXY | MONDEO | RANGER | S-MAX  
DISCOVERY | FREELANDER | EVOQUE  
3 | 5 | 6 | BT-50 | CX-7 | MX-5 | TRIBUTE  
S60 | S80 | V60 | V70 | XC60

**OCV017**



FORD  
LAND ROVER  
VOLVO

FOCUS | GALAXY | MONDEO | S-MAX  
DISCOVERY | FREELANDER | EVOQUE  
S60 | S80 | V60 | V70 | XC60

**OCV019**



AUDI  
SEAT  
SKODA  
VW

A1 | A3 | A4 | A6 | Q7 | TT  
ALTEA | EXEO | LEON | TOLEDO  
OCTAVIA | SUPERB  
ATLAS | CC | EOS | GOLF | JETTA | PASSAT | POLO  
SCIROCCO | TOUREG | TOURAN

**OCV020**



AUDI  
SEAT  
SKODA  
VW

A1 | A3 | A4 | A6 | TT  
ALTEA | EXEO | LEON | TOLEDO  
OCTAVIA  
EOS | GOLF | JETTA | PASSAT | POLO | SCIROCCO

**OCV022**



BMW

1 SERIES | 2 SERIES | 3 SERIES | 4 SERIES | 5 SERIES  
6 SERIES | 7 SERIES | X1 | X3 | X4 | X5 | X6 | Z3 | Z4

**OCV025**



BMW

1 SERIES | 2 SERIES | 3 SERIES | 4 SERIES | 5 SERIES  
6 SERIES | 7 SERIES | X1 | X3 | X4 | X5 | X6 | Z3 | Z4

**OCV026**



ROLLS ROYCE

PHANTOM

LEXUS

CT | ES | GS | IS | LM | NX | RC | RX

**OCV031**

TOYOTA

ALLION | AURIS | AVENSIS | CAMRY | C-HR  
COROLLA | HIGHLANDER | ISIS | MATRIX | NOAH  
PREMIO | PRIUS | RAV 4 | SIENNA | VENZA | VERSO  
WISH | YARIS | ZELAS



LOTUS

2 ELEVEN | ELISE | EXIGE

**OCV033**

TOYOTA

CELZIA | COROLLA | MATRIX



ASTON MARTIN  
DAIHATSU  
SUBARU  
TOYOTA

CYGNET  
CHARADE  
TREZIA  
AURIS | COROLLA | URBAN CRUISER | VERSO  
YARIS

**OCV034**





# OIL CONTROL VALVES PA0071

ASTON MARTIN  
DAIHATSU  
SUBARU  
TOYOTA

CYGNET  
CHARADE  
TREZIA  
AURIS | COROLLA | IQ | URBAN CRUSIER | VERSO  
YARIS

**OCV035**



NISSAN

ALMERA | BLUEBIRD | CUBE | JUKE | KICKS  
MICRA NOTE | NV200 | PULSAR | QASHQAI  
SENTRA | SUNNY | TEANA | TIIDA | VERSA | X-TRAIL

**OCV036**



HONDA

CIVIC | CR-V | INTEGRA | STREAM

**OCV038**



HYUNDAI

ACCENT | CRETA | ELANTRA | i20 | i30 | i40 | ix20  
| ix35 | KONA | SOLARIS | SONATA | TUCSON  
VELOSTER | VENUE

**OCV039**



KIA

CARENS | CEED | CERATO | K3 | OPTIMA | RIO |  
SELTOS | SOUL | SPORTAGE | STONIC | VENGA

HYUNDAI

CRETA | ELANTRA | GENESIS | GRANDEUR | H-1  
i40 | ix35 | SANTA | SONATA | TUCSON

**OCV040**



KIA

CADENZA | CARENS | CERATO | MAGNETIS |  
OPTIMA | SORENTO | SOUL | SPORTAGE |

HYUNDAI

ELANTRA | GRANDEUR | i30 | ix35 | KONA  
SANTA FE | SONATA | TUCSON

**OCV041**



KAI

CADENZA | CERATO | MAGNETIS | OPTIMA  
SORENTO | SPORTAGE



# OIL CONTROL VALVES PA0071

HYUNDAI

GRANDEUR | ix35 | SANTA FE | SONATA

**OCV042**



KIA

CADENZA | CARENS | CERATO | MAGENTIS  
OPTIMA | SORENTO | SPORTAGE

KIA

CADENZA | CERATO | MAGENTIS  
OPTIMA | SORENTO | SPORTAGE

**OCV043**



NISSAN

CUBE | MICRA | NOTE

**OCV044**

