



WATER PUMPS

PA0004 – WP6669 | WP669BH

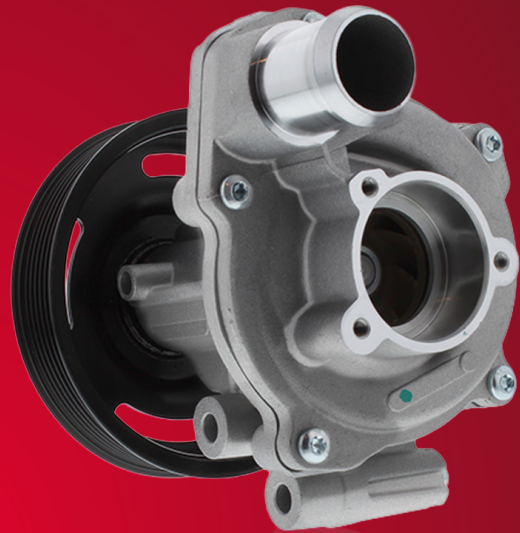
WP6669

(without back housing)



WP669BH

(with back housing)



FAI offers two water pumps for the Ford 2.2 TDCi engine used in the Transit and Ranger models from 2011 onwards.

The same pump design is also fitted to late-model Land Rover Defenders.

Two variants are available: with back housing and without.

View the applications below for more details.

Make	Model	Engine Size	Dates	Engine Codes
Ford	Ranger	2.2 TCDI	04/11 >	GBVAJPF GBVAJQW
	Transit	2.2 TCDI	10/11 - 08/14	CYRB CYRA CVRA CVRB CVRC USRA USRB DRRR DRRV DRRC
Land Rover	Defender	2.2 TD4	08/11 - 02/16	ZSD-422